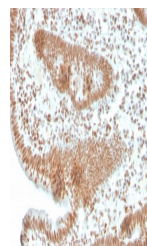


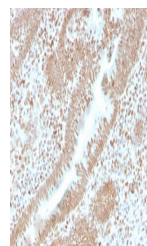
Product Datasheet

PMS2 Antibody / PMS1 homolog 2 (orb699794)

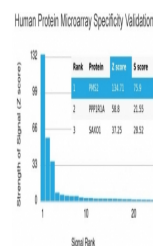
Description	PMS2 is involved in DNA mismatch repair. It forms a heterodimer with MLH1 and this complex interacts...
Species/Host	Rabbit
Reactivity	Human
Conjugation	Unconjugated
Tested Applications	IHC-P
Immunogen	A portion of amino acids 1-100 from the human protein was used as the immunogen for the recombinant PMS2 antibody.
Preservatives	0.2 mg/ml in 1X PBS with 0.1 mg/ml rAlbumin (US sourced), 0.05% sodium azide
Storage	Store the recombinant PMS2 antibody at 2-8°C (with azide) or aliquot and store at -20°C or colder (without azide).
Note	For research use only
Application notes	Optimal dilution of the recombinant PMS2 antibody should be determined by the researcher.
Formula	0.2 mg/ml in 1X PBS with 0.1 mg/ml BSA (US sourced), 0.05% sodium azide
Isotype	Rabbit IgG
Clonality	Recombinant
Purity	Protein A affinity chromatography
Uniprot ID	P54278
Hazard Information	This recombinant PMS2 antibody is available for research use only.
Dilution Range	Immunohistochemistry (FFPE): 1-2ug/ml
Expiration Date	12 months from date of receipt.



IHC staining of FFPE human colon carcino...



IHC staining of FFPE human colon carcino...



Analysis of HuProt (TM) microarray conta...