
Product Datasheet

Retinol Binding Protein 4 Antibody / RBP4 (orb699768)

Description

Retinol (Vitamin A) is transported in the blood bound


Species/Host

Mouse

Reactivity

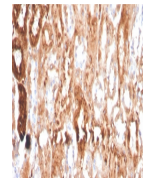
Human

Conjugation

Unconjugated

Tested Applications

IHC-P



IHC staining of FFPE human renal cell ca...

Immunogen

A portion of amino acids 29-148 from the human protein was used as the immunogen for the Retinol Binding Protein 4 antibody.

Preservatives

0.2 mg/ml in 1X PBS with 0.1 mg/ml rAlbumin (US sourced), 0.05% sodium azide

Storage

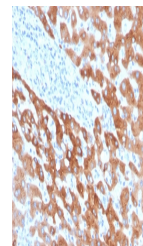
Store the Retinol Binding Protein 4 antibody at 2-8°C (with azide) or aliquot and store at -20°C or colder (without azide).

Note

For research use only

Application notes

Optimal dilution of the Retinol Binding Protein 4 antibody should be determined by the researcher.



IHC staining of FFPE human liver carcino...

Formula

0.2 mg/ml in 1X PBS with 0.1 mg/ml BSA (US sourced), 0.05% sodium azide

Isotype

Mouse IgG2b, kappa

Clonality

Monoclonal

Purity

Protein G affinity chromatography

Uniprot ID
P02753
Hazard Information

This Retinol Binding Protein 4 antibody is available for research use only.

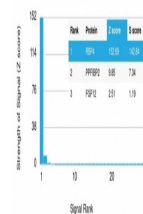
Dilution Range

Immunohistochemistry (FFPE): 1-2ug/ml for 30 minutes at RT

Expiration Date

12 months from date of receipt.

Human Protein Microarray Specificity Validation



Analysis of HuProt (TM) microarray conta...