

---

## Product Datasheet

### PSA / Prostate Specific Antigen Antibody (orb699765)

**Description**

Recognizes a single protein of 33-34kDa, identified


**Species/Host**

Mouse

**Reactivity**

Human

**Conjugation**

Unconjugated

**Tested Applications**

IHC-P

IHC staining of FFPE human prostate carc...

**Immunogen**

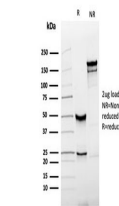
Recombinant full-length human KLK3/PSA protein was used as the immunogen for the recombinant Prostate Specific Antigen antibody.

**Preservatives**

0.2 mg/ml in 1X PBS with 0.1 mg/ml rAlbumin (US sourced), 0.05% sodium azide

**Storage**

Store the recombinant Prostate Specific Antigen antibody at 2-8°C (with azide) or aliquot and store at -20°C or colder (without azide).


**Note**

For research use only

**Application notes**

Optimal dilution of the recombinant Prostate Specific Antigen antibody should be determined by the researcher.

SDS-PAGE analysis of purified, BSA-free ...

**Formula**

0.2 mg/ml in 1X PBS with 0.1 mg/ml BSA (US sourced), 0.05% sodium azide

**Isotype**

Mouse IgG2a, kappa

**Clonality**

Recombinant

**Purity**

Protein G affinity chromatography

**Uniprot ID**

**P07288**

**Hazard Information**

This recombinant Prostate Specific Antigen antibody is available for research use only.

**Dilution Range**

Immunohistochemistry (FFPE): 1-2ug/ml for 30 minutes at RT

**Expiration Date**

12 months from date of receipt.