
Product Datasheet

MBP Antibody / Myelin Basic Protein (orb699744)

Description

Myelin basic protein (MBP) is the second most



myeli...

Species/Host

Rat

Reactivity

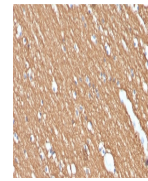
Human

Conjugation

Unconjugated

Tested Applications

IHC-P, WB



IHC staining of FFPE human brain with My...

Immunogen

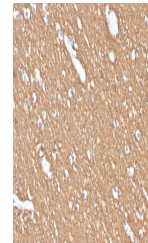
Amino acids GILDSIGRFFGGDRG from the human protein were used as the immunogen for the Myelin Basic Protein antibody.

Preservatives

0.2 mg/ml in 1X PBS with 0.1 mg/ml rAlbumin (US sourced), 0.05% sodium azide

Storage

Store the Myelin Basic Protein antibody at 2-8°C (with azide) or aliquot and store at -20°C or colder (without azide).



IHC staining of FFPE human brain with My...

Note

For research use only

Application notes

Optimal dilution of the Myelin Basic Protein antibody should be determined by the researcher.

Formula

0.2 mg/ml in 1X PBS with 0.1 mg/ml BSA (US sourced), 0.05% sodium azide

Isotype

Rat IgG2b

Clonality

Monoclonal

Purity

Protein G affinity chromatography

Uniprot ID

P02686

Hazard Information

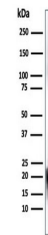
This Myelin Basic Protein antibody is available for research use only.

Dilution Range

Western blot: 1-2ug/ml, Immunohistochemistry (FFPE): 1-2ug/ml for 30 minutes at RT

Expiration Date

12 months from date of receipt.



Western blot testing of human brain lysa...