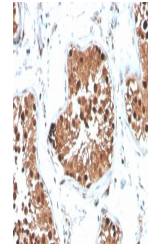


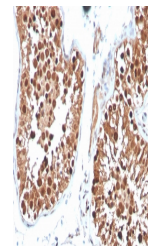
Product Datasheet

INHA Antibody / Inhibin alpha (orb699739)

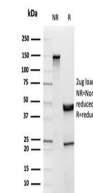
Description	It recognizes a 47kDa protein, which is identified as alpha sub-unit of Inhibin. It is a gonadal pro...
Species/Host	Mouse
Reactivity	Human
Conjugation	Unconjugated
Tested Applications	IHC-P
Immunogen	A portion of amino acids 73-96 from the huma protein was used as the immunogen for the Inhibin alpha antibody.
Preservatives	0.2 mg/ml in 1X PBS with 0.1 mg/ml rAlbumin (US sourced), 0.05% sodium azide
Storage	Store the Inhibin alpha antibody at 2-8°C (with azide) or aliquot and store at -20°C or colder (without azide).
Note	For research use only
Application notes	Optimal dilution of the Inhibin alpha antibody should be determined by the researcher.
Formula	0.2 mg/ml in 1X PBS with 0.1 mg/ml BSA (US sourced), 0.05% sodium azide
Isotype	Mouse IgG2a
Clonality	Monoclonal
Purity	Protein G affinity chromatography
Uniprot ID	P05111
Hazard Information	This Inhibin alpha antibody is available for research use only.
Dilution Range	Immunohistochemistry (FFPE): 1-2ug/ml for 30 minutes at RT
Expiration Date	12 months from date of receipt.



IHC staining of FFPE human testis with I...



IHC staining of FFPE human testis with I...



SDS-PAGE analysis of purified, BSA-free ...