

Product Datasheet

Cyclin D1 Antibody / CCND1 (orb699718)

Description

Recognizes a protein of 36kDa, identified as cyclin D1.


Species/Host

Rabbit

Reactivity

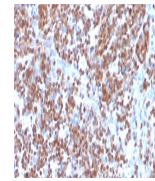
Human

Conjugation

Unconjugated

Tested Applications

IHC-P



IHC staining of FFPE human mantle cell lymphoma tissue.

Immunogen

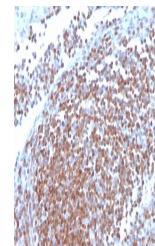
A portion of amino acids 270-295 from the human protein was used as the immunogen for the recombinant Cyclin D1 antibody.

Preservatives

0.2 mg/ml in 1X PBS with 0.1 mg/ml rAlbumin (US sourced), 0.05% sodium azide

Storage

Store the recombinant Cyclin D1 antibody at 2-8°C (with azide) or aliquot and store at -20°C or colder (without azide).



IHC staining of FFPE human mantle cell lymphoma tissue.

Note

For research use only

Application notes

Optimal dilution of the recombinant Cyclin D1 antibody should be determined by the researcher.

Formula

0.2 mg/ml in 1X PBS with 0.1 mg/ml BSA (US sourced), 0.05% sodium azide

Isotype

Rabbit IgG

Clonality

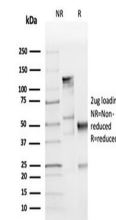
Recombinant

Purity

Protein A affinity chromatography

Uniprot ID

[P24385](#)



SDS-PAGE analysis of purified, BSA-free ...

Hazard Information

This recombinant Cyclin D1 antibody is available for research use only.

Dilution Range

Immunohistochemistry (FFPE): 1-2µg/ml for 30 minutes at RT

Expiration Date

12 months from date of receipt.