

## Product Datasheet

### EpCAM Antibody (orb699717)

**Description**

EGP40 is a 40-43kDa transmembrane epithelial

**Species/Host**

Mouse

**Reactivity**

Human

**Conjugation**

Unconjugated

**Tested Applications**

IHC-P

**Immunogen**

Recombinant full-length human EpCAM protein was used as the immunogen for the recombinant EpCAM antibody. The binding epitope of this antibody is located in the first EGF-like repeat domain (EGF1) between amino acids 27-59.

**Preservatives**

0.2 mg/ml in 1X PBS with 0.1 mg/ml rAlbumin (US sourced), 0.05% sodium azide

**Storage**

Store the recombinant EpCAM antibody at 2-8°C (with azide) or aliquot and store at -20°C or colder (without azide).

**Note**

For research use only

**Application notes**

Optimal dilution of the recombinant EpCAM antibody should be determined by the researcher.

**Formula**

0.2 mg/ml in 1X PBS with 0.1 mg/ml BSA (US sourced), 0.05% sodium azide

**Isotype**

Mouse IgG2a, kappa

**Clonality**

Recombinant

**Purity**

Protein G affinity chromatography

**Uniprot ID**

**P16422**

**Hazard Information**

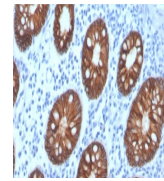
This recombinant EpCAM antibody is available for research use only.

**Dilution Range**

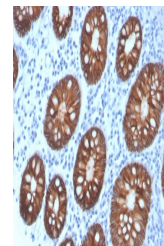
Immunohistochemistry (FFPE): 1-2ug/ml for 30 minutes at RT

**Expiration Date**

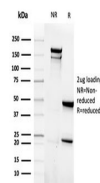
12 months from date of receipt.



IHC staining of FFPE human colon carcinom...



IHC staining of FFPE human colon carcinom...



SDS-PAGE analysis of purified, BSA-free ...