
Product Datasheet

EpCAM Antibody (orb699716)

Description

EGP40 is a 40-43kDa transmembrane epithelial

Species/Host

Rabbit

Reactivity

Human

Conjugation

Unconjugated

Tested Applications

IHC-P

Immunogen

Recombinant full-length human EpCAM protein was used as the immunogen for the recombinant EpCAM antibody. The binding epitope of this antibody is located in the first EGF-like repeat domain (EGF1) between amino acids 27-59.

Preservatives

0.2 mg/ml in 1X PBS with 0.1 mg/ml rAlbumin (US sourced), 0.05% sodium azide

Storage

Store the recombinant EpCAM antibody at 2-8°C (with azide) or aliquot and store at -20°C or colder (without azide).

Note

For research use only

Application notes

Optimal dilution of the recombinant EpCAM antibody should be determined by the researcher.

Formula

0.2 mg/ml in 1X PBS with 0.1 mg/ml BSA (US sourced), 0.05% sodium azide

Isotype

Rabbit IgG

Clonality

Recombinant

Purity

Protein A affinity chromatography

Uniprot ID

P16422

Hazard Information

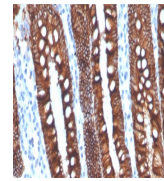
This recombinant EpCAM antibody is available for research use only.

Dilution Range

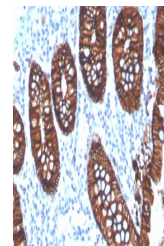
Immunohistochemistry (FFPE): 1-2ug/ml for 30 minutes at RT

Expiration Date

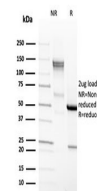
12 months from date of receipt.



IHC staining of FFPE human ovarian carcin...



IHC staining of FFPE human colon carcinom...



SDS-PAGE analysis of purified, BSA-free ...