

---

## Product Datasheet

**PD-L1 Antibody / B7-H1 / CD274 (orb699708)**

**Description**

PD-L1 is a checkpoint regulator in immune cells, it is


**Species/Host**

Mouse

**Reactivity**

Human

**Conjugation**

Unconjugated

**Tested Applications**

IHC-P

IHC staining of FFPE human placenta with...

**Immunogen**

A portion of amino acids 39-191 from the human protein was used as the immunogen for the recombinant PDL1 antibody.

**Preservatives**

0.2 mg/ml in 1X PBS with 0.1 mg/ml rAlbumin (US sourced), 0.05% sodium azide

**Storage**

Store the recombinant PDL1 antibody at 2-8°C (with azide) or aliquot and store at -20°C or colder (without azide).

**Note**

For research use only

**Application notes**

Optimal dilution of the recombinant PDL1 antibody should be determined by the researcher.

IHC staining of FFPE human skin with rec...

**Formula**

0.2 mg/ml in 1X PBS with 0.1 mg/ml BSA (US sourced), 0.05% sodium azide

**Isotype**

Mouse IgG2a, kappa

**Clonality**

Recombinant

**Purity**

Protein G affinity chromatography

**Uniprot ID**

[Q9NZQ7](#)

**Hazard Information**

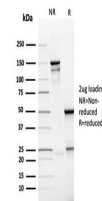
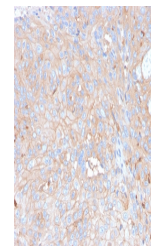
This recombinant PDL1 antibody is available for research use only.

**Dilution Range**

Immunohistochemistry (FFPE): 1-2ug/ml for 30 minutes at RT

**Expiration Date**

12 months from date of receipt.



SDS-PAGE analysis of purified, BSA-free ...