
Product Datasheet

**HER2 Antibody / ErbB2 / Extracellular region
(orb699699)**

Description

Recognizes a protein of 185kDa, which is identified

Species/Host

Rabbit

Reactivity

Human

Conjugation

Unconjugated

Tested Applications

FACS, IF, IHC-P

Immunogen

A recombinant protein encoding the extracellular domain of human c-erbB2 was used as the immunogen for the recombinant HER2 antibody.

Preservatives

0.2 mg/ml in 1X PBS with 0.1 mg/ml rAlbumin (US sourced), 0.05% sodium azide

Storage

Store the recombinant HER2 antibody at 2-8°C (with azide) or aliquot and store at -20°C or colder (without azide).

Note

For research use only

Application notes

Optimal dilution of the recombinant HER2 antibody should be determined by the researcher.

Formula

0.2 mg/ml in 1X PBS with 0.1 mg/ml BSA (US sourced), 0.05% sodium azide

Isotype

Rabbit

Clonality

Monoclonal

Purity

Protein A affinity chromatography

Uniprot ID

P04626

Hazard Information

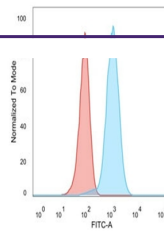
This recombinant HER2 antibody is available for research use only.

Dilution Range

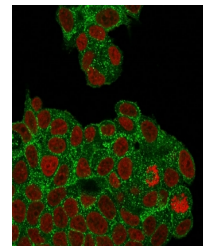
Flow cytometry: 1-2ug/million cells, Immunofluorescence: 1-2ug/ml, Immunohistochemistry (FFPE): 1-2ug/ml for 30 minutes at RT

Expiration Date

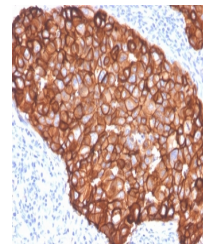
12 months from date of receipt.



Flow cytometry testing of PFA-fixed huma...



Immunofluorescent staining of PFA-fixed ...



IHC staining of FFPE human breast carcin...