
Product Datasheet

CEA Antibody / Carcinoembryonic Antigen (orb699698)

Description

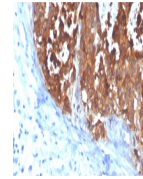
The CD66 (carcinoembryonic antigen, CEA, biliary



super...

Species/Host

Mouse


Reactivity

Human

Conjugation

Unconjugated

Tested Applications

IHC-P

IHC staining of FFPE human colon carcinoma...

Immunogen

Recombinant full-length human CEA protein was used as the immunogen for the CEA antibody.

Preservatives

0.2 mg/ml in 1X PBS with 0.1 mg/ml rAlbumin (US sourced), 0.05% sodium azide

Storage

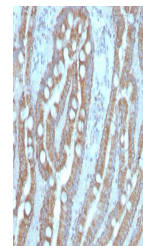
Store the CEA antibody at 2-8°C (with azide) or aliquot and store at -20°C or colder (without azide).

Note

For research use only

Application notes

Optimal dilution of the CEA antibody should be determined by the researcher.



IHC staining of FFPE human small intestine...

Formula

0.2 mg/ml in 1X PBS with 0.1 mg/ml BSA (US sourced), 0.05% sodium azide

Isotype

Mouse IgG1, kappa

Clonality

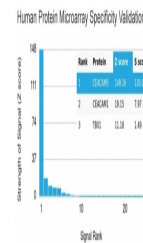
Monoclonal

Purity

Protein G affinity chromatography

Uniprot ID

P06731


Hazard Information

This CEA antibody is available for research use only.

Dilution Range

Immunohistochemistry (FFPE): 1-2ug/ml for 30 minutes at RT

Analysis of HuProt (TM) microarray conta...

Expiration Date

12 months from date of receipt.