

---

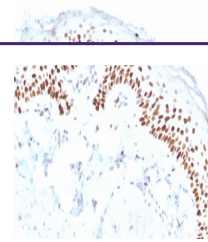
## Product Datasheet

### p40 / deltaNp63 Antibody (orb699696)

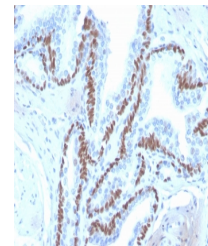
**Description**

p63 consists of two major isoforms-TAp63 and delta-

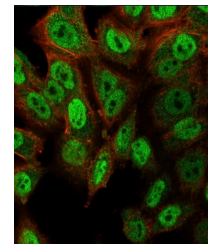
<b>Species/Host</b>	Rabbit
<b>Reactivity</b>	Human
<b>Conjugation</b>	Unconjugated
<b>Tested Applications</b>	FACS, IF, IHC-P
<b>Immunogen</b>	Amino acids ENNAQTQFSEPQY were used as the immunogen for the deltaNp63 antibody.
<b>Preservatives</b>	0.2 mg/ml in 1X PBS with 0.1 mg/ml rAlbumin (US sourced), 0.05% sodium azide
<b>Storage</b>	Store the deltaNp63 antibody at 2-8°C (with azide) or aliquot and store at -20°C or colder (without azide).
<b>Note</b>	For research use only
<b>Application notes</b>	Optimal dilution of the deltaNp63 antibody should be determined by the researcher.
<b>Formula</b>	0.2 mg/ml in 1X PBS with 0.1 mg/ml BSA (US sourced), 0.05% sodium azide
<b>Isotype</b>	Rabbit IgG
<b>Clonality</b>	Monoclonal
<b>Purity</b>	Protein A affinity chromatography
<b>Uniprot ID</b>	<b>Q9H3D4</b>
<b>Hazard Information</b>	This deltaNp63 antibody is available for research use only.
<b>Dilution Range</b>	Flow cytometry: 1-2ug/million cells, Immunofluorescence: 1-2ug/ml, Immunohistochemistry (FFPE): 1-2ug/ml for 30 minutes at RT
<b>Expiration Date</b>	12 months from date of receipt.



IHC staining of FFPE human skin with del...



IHC staining of FFPE human skin with del...



Immunofluorescent staining of PFA-fixed ...