
Product Datasheet

p40 / deltaNp63 Antibody (orb699695)

Description

p63 consists of two major isoforms-TAp63 and delta-

Species/Host

Rabbit

Reactivity

Human

Conjugation

Unconjugated

Tested Applications

FACS, IF, IHC-P

Immunogen

A synthetic peptide from the N-terminal of human p40 protein was used as the immunogen for the p40 antibody.

Preservatives

0.2 mg/ml in 1X PBS with 0.1 mg/ml rAlbumin (US sourced), 0.05% sodium azide

Storage

Store the recombinant p40 antibody at 2-8°C (with azide) or aliquot and store at -20°C or colder (without azide).

Note

For research use only

Application notes

Optimal dilution of the recombinant p40 antibody should be determined by the researcher.

Formula

0.2 mg/ml in 1X PBS with 0.1 mg/ml BSA (US sourced), 0.05% sodium azide

Isotype

Rabbit IgG

Clonality

Recombinant

Purity

Protein A affinity chromatography

Uniprot ID

[Q9H3D4](#)

Hazard Information

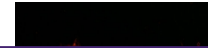
This recombinant p40 antibody is available for research use only.

Dilution Range

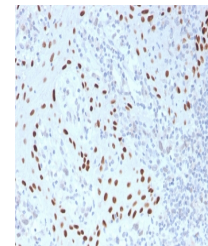
Flow cytometry: 1-2ug/million cells, Immunofluorescence: 1-2ug/ml, Immunohistochemistry (FFPE): 1-2ug/ml for 30 minutes at RT

Expiration Date

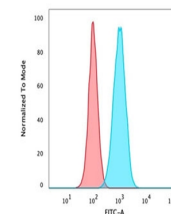
12 months from date of receipt.



Immunofluorescent staining of PFA-fixed ...



IHC staining of FFPE human skin with rec...



Flow cytometry testing of PFA-fixed huma...