

---

## Product Datasheet

### p40 / deltaNp63 Antibody (orb699694)

**Description**

p63 consists of two major isoforms-TAp63 and delta-

**Species/Host**

Mouse

**Reactivity**

Human

**Conjugation**

Unconjugated

**Tested Applications**

FACS, IF, IHC-P

**Immunogen**

A synthetic peptide from the N-terminal of human p40 protein was used as the immunogen for the recombinant p40 antibody.

**Preservatives**

0.2 mg/ml in 1X PBS with 0.1 mg/ml rAlbumin (US sourced), 0.05% sodium azide

**Storage**

Store the recombinant p40 antibody at 2-8°C (with azide) or aliquot and store at -20°C or colder (without azide).

**Note**

For research use only

**Application notes**

Optimal dilution of the recombinant p40 antibody should be determined by the researcher.

**Formula**

0.2 mg/ml in 1X PBS with 0.1 mg/ml BSA (US sourced), 0.05% sodium azide

**Isotype**

Mouse IgG1, kappa

**Clonality**

Recombinant

**Purity**

Protein G affinity chromatography

**Uniprot ID**

**Q9H3D4**

**Hazard Information**

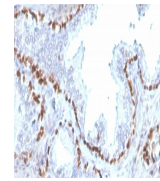
This recombinant p40 antibody is available for research use only.

**Dilution Range**

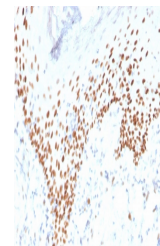
Flow cytometry: 1-2ug/million cells, Immunofluorescence: 1-2ug/ml, Immunohistochemistry (FFPE): 1-2ug/ml for 30 minutes at RT

**Expiration Date**

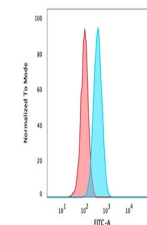
12 months from date of receipt.



IHC staining of FFPE human kidney with r...



IHC staining of FFPE human skin with rec...



Flow cytometry testing of PFA-fixed huma...