
Product Datasheet

SOD1 Antibody / Superoxide Dismutase 1 (orb699690)

Description

Cu-Zn superoxide dismutase-1 (SOD-1) is a well-

radi...

Species/Host

Mouse

Reactivity

Human

Conjugation

Unconjugated

Tested Applications

IHC-P, WB

Immunogen

A portion of amino acids 14-148 from the human protein was used as the immunogen for the SOD1 antibody.

Preservatives

0.2 mg/ml in 1X PBS with 0.1 mg/ml rAlbumin (US sourced), 0.05% sodium azide

Storage

Store the SOD1 antibody at 2-8°C (with azide) or aliquot and store at -20°C or colder (without azide).

Note

For research use only

Application notes

Optimal dilution of the SOD1 antibody should be determined by the researcher.

Formula

0.2 mg/ml in 1X PBS with 0.1 mg/ml BSA (US sourced), 0.05% sodium azide

Isotype

Mouse IgG1, kappa

Clonality

Monoclonal

Purity

Protein G affinity chromatography

Uniprot ID

P00441

Hazard Information

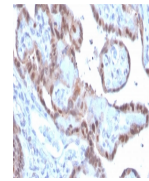
This SOD1 antibody is available for research use only.

Dilution Range

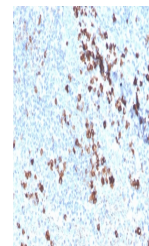
Western blot: 2-4ug/ml, Immunohistochemistry (FFPE): 1-2ug/ml for 30 minutes at RT

Expiration Date

12 months from date of receipt.



IHC staining of FFPE human placenta with...



IHC staining of FFPE human tonsil with S...



Western blot testing of human JEG-3 a...