

---

## Product Datasheet

### SOD1 Antibody / Superoxide Dismutase 1 (orb699687)

**Description**

Cu-Zn superoxide dismutase-1 (SOD-1) is a well-

radi...

**Species/Host**

Mouse

**Reactivity**

Human

**Conjugation**

Unconjugated

**Tested Applications**

FACS, IHC-P, WB

**Immunogen**

A portion of amino acids 14-148 from the human protein was used as the immunogen for the SOD1 antibody.

**Preservatives**

0.2 mg/ml in 1X PBS with 0.1 mg/ml rAlbumin (US sourced), 0.05% sodium azide

**Storage**

Store the SOD1 antibody at 2-8°C (with azide) or aliquot and store at -20°C or colder (without azide).

**Note**

For research use only

**Application notes**

Optimal dilution of the SOD1 antibody should be determined by the researcher.

**Formula**

0.2 mg/ml in 1X PBS with 0.1 mg/ml BSA (US sourced), 0.05% sodium azide

**Isotype**

Mouse IgG2b, kappa

**Clonality**

Monoclonal

**Purity**

Protein G affinity chromatography

**Uniprot ID**

**P00441**

**Hazard Information**

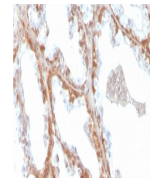
This SOD1 antibody is available for research use only.

**Dilution Range**

Western blot: 2-4ug/ml, Flow cytometry: 1-2ug/million cells, Immunohistochemistry (FFPE): 1-2ug/ml for 30 minutes at RT

**Expiration Date**

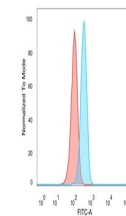
12 months from date of receipt.



IHC staining of FFPE human prostate with...



Western blot testing of human 1) JEG-3 a...



Flow cytometry testing of PFA-fixed huma...