
Product Datasheet

Mammaglobin A Antibody / SCGB2A2 (orb699684)

Description

Mammaglobin is a 93 amino acid glycoprotein with


Species/Host

Rabbit

Reactivity

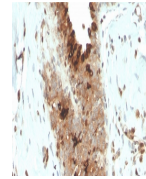
Human

Conjugation

Unconjugated

Tested Applications

IHC-P



IHC staining of FFPE human breast carcin...

Immunogen

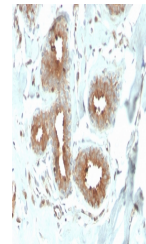
Recombinant full-length human Mammaglobin-1 protein was used as the immunogen for the recombinant Mammaglobin antibody.

Preservatives

0.2 mg/ml in 1X PBS with 0.1 mg/ml rAlbumin (US sourced), 0.05% sodium azide

Storage

Store the recombinant Mammaglobin antibody at 2-8°C (with azide) or aliquot and store at -20°C or colder (without azide).



IHC staining of FFPE human breast carcin...

Note

For research use only

Application notes

Optimal dilution of the recombinant Mammaglobin antibody should be determined by the researcher.

Formula

0.2 mg/ml in 1X PBS with 0.1 mg/ml BSA (US sourced), 0.05% sodium azide

Isotype

Rabbit IgG, kappa

Clonality

Recombinant

Purity

Protein A affinity chromatography

Uniprot ID

[Q13296](#)

Hazard Information

This recombinant Mammaglobin antibody is available for research use only.

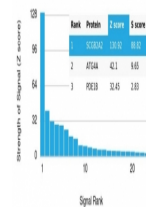
Dilution Range

Immunohistochemistry (FFPE): 1-2ug/ml for 30 minutes at RT

Expiration Date

12 months from date of receipt.

Human Protein Microarray Specificity Validation



Analysis of HuProt (TM) microarray conta...