

---

## Product Datasheet

### Mammaglobin A Antibody / SCGB2A2 (orb699683)

**Description**

Mammaglobin is a 93 amino acid glycoprotein with

**Species/Host**

Mouse

**Reactivity**

Human

**Conjugation**

Unconjugated

**Tested Applications**

IHC-P

**Immunogen**

Recombinant full-length human Mammaglobin-1 protein was used as the immunogen for the Mammaglobin antibody.

**Preservatives**

0.2 mg/ml in 1X PBS with 0.1 mg/ml rAlbumin (US sourced), 0.05% sodium azide

**Storage**

Store the Mammaglobin antibody at 2-8°C (with azide) or aliquot and store at -20°C or colder (without azide).

**Note**

For research use only

**Application notes**

Optimal dilution of the Mammaglobin antibody should be determined by the researcher.

**Formula**

0.2 mg/ml in 1X PBS with 0.1 mg/ml BSA (US sourced), 0.05% sodium azide

**Isotype**

Mouse IgG1, kappa

**Clonality**

Monoclonal

**Purity**

Protein G affinity chromatography

**Uniprot ID**

[Q13296](#)

**Hazard Information**

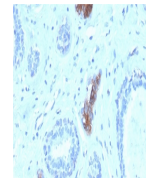
This Mammaglobin antibody is available for research use only.

**Dilution Range**

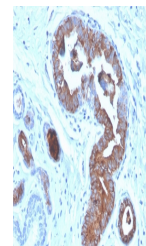
Immunohistochemistry (FFPE): 1-2ug/ml for 30 minutes at RT

**Expiration Date**

12 months from date of receipt.

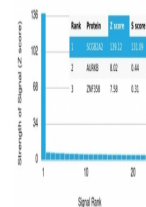


HC staining of FFPE human breast carcino...



HC staining of FFPE human breast carcino...

Human Protein Microarray Specificity Validation



Analysis of HuProt (TM) microarray conta...