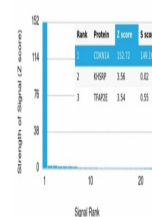


## Product Datasheet

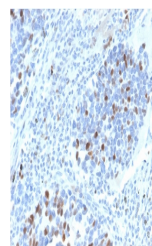
### p21 Antibody / CDKN1A (orb699682)

<b>Description</b>	This MAb recognizes a 21kDa protein, identified as the p21WAF1 tumor suppressor protein. This MAb is...
<b>Species/Host</b>	Rabbit
<b>Reactivity</b>	Human
<b>Conjugation</b>	Unconjugated
<b>Tested Applications</b>	IHC-P
<b>Immunogen</b>	A portion of amino acids 1-100 from the human protein was used as the immunogen for the recombinant p21 antibody.
<b>Preservatives</b>	0.2 mg/ml in 1X PBS with 0.1 mg/ml rAlbumin (US sourced), 0.05% sodium azide
<b>Storage</b>	Store the recombinant p21 antibody at 2-8°C (with azide) or aliquot and store at -20°C or colder (without azide).
<b>Note</b>	For research use only
<b>Application notes</b>	Optimal dilution of the recombinant p21 antibody should be determined by the researcher.
<b>Formula</b>	0.2 mg/ml in 1X PBS with 0.1 mg/ml BSA (US sourced), 0.05% sodium azide
<b>Isotype</b>	Rabbit IgG
<b>Clonality</b>	Recombinant
<b>Purity</b>	Protein A affinity chromatography
<b>Uniprot ID</b>	<b>P38936</b>
<b>Hazard Information</b>	This recombinant p21 antibody is available for research use only.
<b>Dilution Range</b>	Immunohistochemistry (FFPE): 1-2ug/ml for 30 minutes at RT
<b>Expiration Date</b>	12 months from date of receipt.

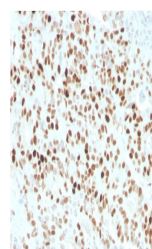
Human Protein Microarray Specificity Validation



Analysis of HuProt (TM) microarray conta...



IHC staining of FFPE human lung carcinom...



IHC staining of FFPE human colon carcino...