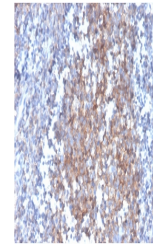


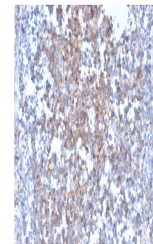
Product Datasheet

FasL Antibody / Fas Ligand (orb699677)

| | |
|----------------------------|--|
| Description | Cytotoxic T lymphocyte (CTL)-mediated cytotoxicity constitutes an important component of specific eff... |
| Species/Host | Mouse |
| Reactivity | Human |
| Conjugation | Unconjugated |
| Tested Applications | IHC-P |
| Immunogen | A portion of amino acids 107-222 from the human protein was used as the immunogen for the Fas Ligand antibody. |
| Preservatives | 0.2 mg/ml in 1X PBS with 0.1 mg/ml rAlbumin (US sourced), 0.05% sodium azide |
| Storage | Store the Fas Ligand antibody at 2-8°C (with azide) or aliquot and store at -20°C or colder (without azide). |
| Note | For research use only |
| Application notes | Optimal dilution of the Fas Ligand antibody should be determined by the researcher. |
| Formula | 0.2 mg/ml in 1X PBS with 0.1 mg/ml BSA (US sourced), 0.05% sodium azide |
| Isotype | Mouse IgG1, kappa |
| Clonality | Monoclonal |
| Purity | Protein G affinity chromatography |
| Uniprot ID | P48023 |
| Hazard Information | This Fas Ligand antibody is available for research use only. |
| Dilution Range | Immunohistochemistry (FFPE): 1-2ug/ml for 30 minutes at RT |
| Expiration Date | 12 months from date of receipt. |

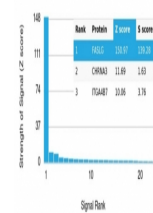


IHC staining of FFPE human tonsil with F...



IHC staining of FFPE human tonsil with F...

Human Protein Microarray Specificity Validation



Analysis of HuProt (TM) microarray conta...