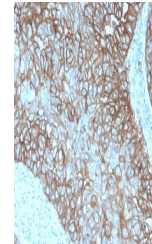


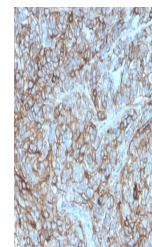
## Product Datasheet

### PD-L1 Antibody / B7-H1 / CD274 (orb699667)

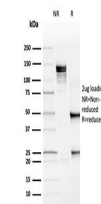
|                            |   |
|----------------------------|---|
| <b>Description</b>         | PD-L1 is a checkpoint regulator in immune cells, it is expressed on immune or non-hematopoietic cell...             |
| <b>Species/Host</b>        | Mouse   |
| <b>Reactivity</b>          | Human   |
| <b>Conjugation</b>         | Unconjugated  |
| <b>Tested Applications</b> | IHC-P   |
| <b>Immunogen</b>           | A linear peptide specific to human PD-L1 was used as the immunogen for the recombinant PD-L1 antibody.              |
| <b>Preservatives</b>       | 0.2 mg/ml in 1X PBS with 0.1 mg/ml rAlbumin (US sourced), 0.05% sodium azide  |
| <b>Storage</b>             | Store the recombinant PD-L1 antibody at 2-8°C (with azide) or aliquot and store at -20°C or colder (without azide). |
| <b>Note</b>                | For research use only   |
| <b>Application notes</b>   | Optimal dilution of the recombinant PD-L1 antibody should be determined by the researcher.                          |
| <b>Formula</b>             | 0.2 mg/ml in 1X PBS with 0.1 mg/ml BSA (US sourced), 0.05% sodium azide   |
| <b>Isotype</b>             | Mouse IgG2a, kappa  |
| <b>Clonality</b>           | Recombinant   |
| <b>Purity</b>              | Protein G affinity chromatography   |
| <b>Uniprot ID</b>          | <a href="#">Q9NZQ7</a>  |
| <b>Hazard Information</b>  | This recombinant PD-L1 antibody is available for research use only.   |
| <b>Dilution Range</b>      | Immunohistochemistry (FFPE): 1-2ug/ml for 30 minutes at RT  |
| <b>Expiration Date</b>     | 12 months from date of receipt.   |



IHC staining of FFPE human breast carcin...



IHC staining of FFPE human breast carcin...



SDS-PAGE analysis of purified, BSA-free ...