
Product Datasheet

ACE Antibody / Angiotensin I Converting Enzyme (orb699633)

Description

This gene encodes an enzyme involved in catalyzing

Species/Host

Mouse

Reactivity

Human

Conjugation

Unconjugated

Tested Applications

ELISA, IHC-P, WB

Immunogen

A portion of amino acids 652-788 from the human protein was used as the immunogen for the ACE antibody.

Preservatives

0.2 mg/ml in 1X PBS with 0.1 mg/ml rAlbumin (US sourced), 0.05% sodium azide

Storage

Store the ACE antibody at 2-8°C (with azide) or aliquot and store at -20°C or colder (without azide).

Note

For research use only

Application notes

Optimal dilution of the ACE antibody should be determined by the researcher.

Formula

0.2 mg/ml in 1X PBS with 0.1 mg/ml BSA (US sourced), 0.05% sodium azide

Isotype

Mouse IgG2b, kappa

Clonality

Monoclonal

Purity

Protein G affinity chromatography

Uniprot ID

[P12821](#)

Hazard Information

This ACE antibody is available for research use only.

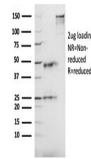
Dilution Range

Western blot: 1-2ug/ml, ELISA: order Ab without BSA for coating, Immunohistochemistry (FFPE): 1-2ug/ml for 30 minutes at RT

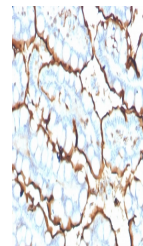
Expiration Date

12 months from date of receipt.

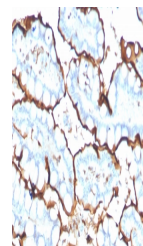
100 75 50 25 10



SDS-PAGE analysis of purified, BSA-free ...



IHC staining of FFPE human small intesti...



IHC staining of FFPE human small intesti...