
Product Datasheet

FTL Antibody / Ferritin Light Chain (orb699626)

Description

Mammalian ferritins consist of 24 subunits made up of

Species/Host

Rabbit

Reactivity

Human

Conjugation

Unconjugated

Tested Applications

IHC-P, WB

Immunogen

Recombinant full-length human FTL protein was used as the immunogen for the recombinant Ferritin Light Chain antibody.

Preservatives

0.2 mg/ml in 1X PBS with 0.1 mg/ml rAlbumin (US sourced), 0.05% sodium azide

Storage

Store the recombinant Ferritin Light Chain antibody at 2-8°C (with azide) or aliquot and store at -20°C or colder (without azide).

Note

For research use only

Application notes

Optimal dilution of the recombinant Ferritin Light Chain antibody should be determined by the researcher.

Formula

0.2 mg/ml in 1X PBS with 0.1 mg/ml BSA (US sourced), 0.05% sodium azide

Isotype

Rabbit IgG

Clonality

Recombinant

Purity

Protein A affinity chromatography

Uniprot ID

P02792

Hazard Information

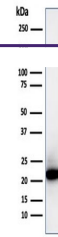
This recombinant Ferritin Light Chain antibody is available for research use only.

Dilution Range

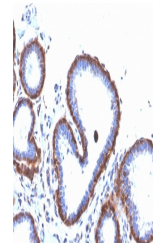
Western blot: 2-4ug/ml, Immunohistochemistry (FFPE): 1-2ug/ml for 30 minutes at RT

Expiration Date

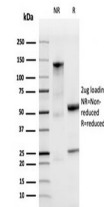
12 months from date of receipt.



Western blot testing of human kidney lys...



IHC staining of FFPE human breast carcin...



SDS-PAGE analysis of purified, BSA-free ...