

Product Datasheet

Eosinophil Peroxidase Antibody (orb699616)

Description	Peripheral blood granulocytes are classified into neutrophils, basophils and eosinophils according to the staining characteristics of their cytoplasmic granules. Granule proteins are released by physiologic and pharmacologic stimuli and play important roles in both normal and pathological host immune responses. Eosinophil major basic protein and eosinophil peroxidase (EPX) are granule proteins specific to the eosinophil. AHE-1 recognizes human EPX, a granule protein specific to eosinophils. It does not cross-react with eosinophil major basic protein, elastase, cathepsin G, esterase N, thrombin, plasmin, kallikrein, lactoferrin, or transferrin. This MAb stains eosinophils only and does not stain other peripheral blood cells, including platelets, neutrophils, monocytes, lymphocytes or red blood cells. Human EPX gene product can form a tetramer of two light chains and two heavy chains. Other peroxidase family members include myeloperoxidase (MPO), lactoperoxidase (LPO), and thyroid peroxidase (TPO).
Species/Host	Rabbit
Reactivity	Human
Conjugation	Unconjugated
Tested Applications	FACS, IF, IHC-P
Immunogen	Human eosinophils from a patient with hypereosinophilic syndrome were used as the immunogen for the EPX antibody.
Preservatives	0.2 mg/ml in 1X PBS with 0.1 mg/ml rAlbumin (US sourced), 0.05% sodium azide
Storage	Store the recombinant EPX antibody at 2-8°C (with azide) or aliquot and store at -20°C or colder (without azide).
Note	For research use only
Application notes	Optimal dilution of the recombinant EPX antibody should be determined by the researcher.

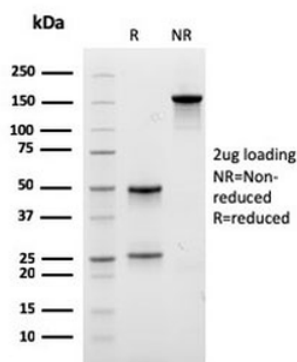
Biorbyt Ltd.

7 Signet Court, Swann's Road,
Cambridge, CB5 8LA, United Kingdom
Email: info@biorbyt.com, support@biorbyt.com
Phone: [+44 \(0\) 1223 859-353](tel:+44(0)1223859353) | Fax: [+1 \(415\) 651-8558](tel:+1(415)6518558)

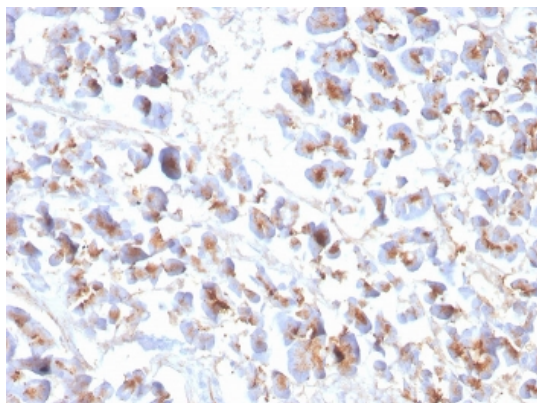
Biorbyt LLC.

68 TW Alexander Drive,
Durham, NC, 27713, United States
Email: info@biorbyt.com, support@biorbyt.com
Phone: [+1 \(415\) 906-5211](tel:+1(415)9065211) | Fax: [+1 \(415\) 651-8558](tel:+1(415)6518558)

Formula	0.2 mg/ml in 1X PBS with 0.1 mg/ml BSA (US sourced), 0.05% sodium azide
Isotype	Rabbit IgG
Clonality	Recombinant
Clone Number	EPX/3908R
Purity	Protein A affinity chromatography
Uniprot ID	P11678
Hazard Information	This recombinant EPX antibody is available for research use only.
Dilution Range	Flow cytometry: 0.5-1ug/million cells, Immunofluorescence: 0.5-1ug/ml, Immunohistochemistry (FFPE): 1-2ug/ml for 30 minutes at RT
Expiration Date	12 months from date of receipt.



SDS-PAGE analysis of purified, BSA-free recombinant EPX antibody as confirmation of integrity and purity.



IHC staining of FFPE human pancreas with recombinant EPX antibody. HIER: boil tissue sections in pH9 10mM Tris with 1mM EDTA for 20 min and allow to cool before testing.

Biorbyt Ltd.

7 Signet Court, Swann's Road,
Cambridge, CB5 8LA, United Kingdom
Email: info@biorbyt.com, support@biorbyt.com
Phone: [+44 \(0\) 1223 859-353](tel:+44(0)1223859353) | Fax: [+1 \(415\) 651-8558](tel:+1(415)6518558)

Biorbyt LLC.

68 TW Alexander Drive,
Durham, NC, 27713, United States
Email: info@biorbyt.com, support@biorbyt.com
Phone: [+1 \(415\) 906-5211](tel:+1(415)9065211) | Fax: [+1 \(415\) 651-8558](tel:+1(415)6518558)