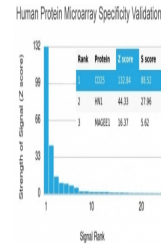


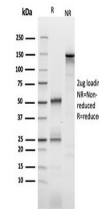
## Product Datasheet

### CD25 Antibody / IL2RA (orb699612)

<b>Description</b>	Recognizes a protein of 55kDa, identified as CD25 (Workshop IV; Code A27). CD25 is expressed on acti...
<b>Species/Host</b>	Mouse
<b>Reactivity</b>	Human
<b>Conjugation</b>	Unconjugated
<b>Tested Applications</b>	ELISA
<b>Immunogen</b>	Stimulated human leukocytes were used as the immunogen for the CD25 antibody.
<b>Preservatives</b>	0.2 mg/ml in 1X PBS with 0.1 mg/ml rAlbumin (US sourced), 0.05% sodium azide
<b>Storage</b>	Store the CD25 antibody at 2-8°C (with azide) or aliquot and store at -20°C or colder (without azide).
<b>Note</b>	For research use only
<b>Application notes</b>	Optimal dilution of the CD25 antibody should be determined by the researcher.
<b>Formula</b>	0.2 mg/ml in 1X PBS with 0.1 mg/ml BSA (US sourced), 0.05% sodium azide
<b>Isotype</b>	Mouse IgG2b, kappa
<b>Clonality</b>	Monoclonal
<b>Purity</b>	Protein G affinity chromatography
<b>Uniprot ID</b>	<b>P01589</b>
<b>Hazard Information</b>	This CD25 antibody is available for research use only.
<b>Dilution Range</b>	ELISA: order Ab without BSA for coating
<b>Expiration Date</b>	12 months from date of receipt.



Analysis of HuProt (TM) microarray conta...



SDS-PAGE analysis of purified, BSA-free ...