
Product Datasheet

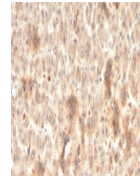
Secretory Component p85 Antibody / ECM1 (orb699608)

Description

This MAb reacts with a reduction-resistant epitope



Com...


Species/Host

Mouse

Reactivity

Human

Conjugation

Unconjugated

Tested Applications

IHC-P

IHC staining of FFPE human liver with re...

Immunogen

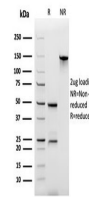
Recombinant full-length human protein was used as the immunogen for the recombinant Secretory Component antibody.

Preservatives

0.2 mg/ml in 1X PBS with 0.1 mg/ml rAlbumin (US sourced), 0.05% sodium azide

Storage

Store the recombinant Secretory Component antibody at 2-8°C (with azide) or aliquot and store at -20°C or colder (without azide).



SDS-PAGE analysis of purified, BSA-free ...

Note

For research use only

Application notes

Optimal dilution of the recombinant Secretory Component antibody should be determined by the researcher.

Formula

0.2 mg/ml in 1X PBS with 0.1 mg/ml BSA (US sourced), 0.05% sodium azide

Isotype

Mouse IgG1, kappa

Clonality

Recombinant

Purity

Protein G affinity chromatography

Uniprot ID

Q16610

Hazard Information

This recombinant Secretory Component antibody is available for research use only.

Dilution Range

Immunohistochemistry (FFPE): 1-2ug/ml for 30 minutes at RT

Expiration Date

12 months from date of receipt.