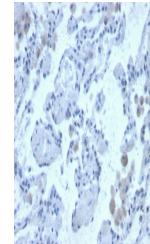


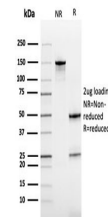
Product Datasheet

Cystatin B Antibody / CSTB / Stefin B (orb699590)

Description	Cystatin A (also designated STF1, STFA, stefin A or cystatin AS) and cystatin B (also designated PME...
Species/Host	Mouse
Reactivity	Human
Conjugation	Unconjugated
Tested Applications	IHC-P, WB
Immunogen	Recombinant full-length human Cystatin B protein was used as the immunogen for the Cystatin B antibody.
Preservatives	0.2 mg/ml in 1X PBS with 0.1 mg/ml rAlbumin (US sourced), 0.05% sodium azide
Storage	Store the Cystatin B antibody at 2-8°C (with azide) or aliquot and store at -20°C or colder (without azide).
Note	For research use only
Application notes	Optimal dilution of the Cystatin B antibody should be determined by the researcher.
Formula	0.2 mg/ml in 1X PBS with 0.1 mg/ml BSA (US sourced), 0.05% sodium azide
Isotype	Mouse IgG1, kappa
Clonality	Monoclonal
Purity	Protein G affinity chromatography
Uniprot ID	P04080
Hazard Information	This Cystatin B antibody is available for research use only.
Dilution Range	Western blot: 1-2ug/ml, Immunohistochemistry (FFPE): 1-2ug/ml for 30 minutes at RT
Expiration Date	12 months from date of receipt.



IHC staining of FFPE human lung with Cys...



SDS-PAGE analysis of purified, BSA-free ...