

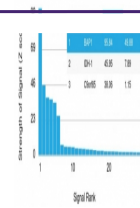
## Product Datasheet

### **BAP1 Antibody / BRCA1 Associated Protein 1 (orb699587)**

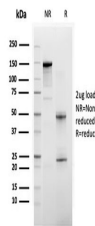
**Description**

The BAP1 gene belongs to the ubiquitin C-terminal

Human Protein Microarray Specificity Validation



Analysis of HuProt (TM) microarray conta...



SDS-PAGE analysis of purified, BSA-free ...

	t...
<b>Species/Host</b>	Mouse
<b>Reactivity</b>	Human
<b>Conjugation</b>	Unconjugated
<b>Tested Applications</b>	ELISA
<b>Immunogen</b>	A portion of amino acids 191-326 from the human protein was used as the immunogen for the BAP1 antibody.
<b>Preservatives</b>	0.2 mg/ml in 1X PBS with 0.1 mg/ml rAlbumin (US sourced), 0.05% sodium azide
<b>Storage</b>	Store the BAP1 antibody at 2-8°C (with azide) or aliquot and store at -20°C or colder (without azide).
<b>Note</b>	For research use only
<b>Application notes</b>	Optimal dilution of the BAP1 antibody should be determined by the researcher.
<b>Formula</b>	0.2 mg/ml in 1X PBS with 0.1 mg/ml BSA (US sourced), 0.05% sodium azide
<b>Isotype</b>	Mouse IgG, kappa
<b>Clonality</b>	Monoclonal
<b>Purity</b>	Protein G affinity chromatography
<b>Uniprot ID</b>	<b>Q92560</b>
<b>Hazard Information</b>	This BAP1 antibody is available for research use only.
<b>Dilution Range</b>	ELISA: order Ab without BSA for coating
<b>Expiration Date</b>	12 months from date of receipt.