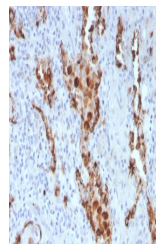


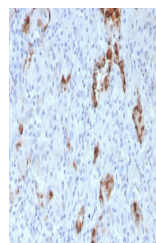
Product Datasheet

Napsin A Antibody (orb699585)

| | |
|----------------------------|--|
| Description | Napsin is a pepsin-like aspartic proteinase connected with maturation of surfactant protein B. There... |
| Species/Host | Mouse |
| Reactivity | Human |
| Conjugation | Unconjugated |
| Tested Applications | IHC-P |
| Immunogen | Amino acids 189-299 from the human protein were used as the immunogen for the Napsin A antibody. |
| Preservatives | 0.2 mg/ml in 1X PBS with 0.1 mg/ml rAlbumin (US sourced), 0.05% sodium azide |
| Storage | Store the Napsin A antibody at 2-8°C (with azide) or aliquot and store at -20°C or colder (without azide). |
| Note | For research use only |
| Application notes | Optimal dilution of the Napsin A antibody should be determined by the researcher. |
| Formula | 0.2 mg/ml in 1X PBS with 0.1 mg/ml BSA (US sourced), 0.05% sodium azide |
| Isotype | Mouse IgG1, kappa |
| Clonality | Monoclonal |
| Purity | Protein G affinity chromatography |
| Uniprot ID | O96009 |
| Hazard Information | This Napsin A antibody is available for research use only. |
| Dilution Range | Immunohistochemistry (FFPE): 1-2ug/ml for 30 minutes at RT |
| Expiration Date | 12 months from date of receipt. |



IHC staining of FFPE human lung adenocar...



IHC staining of FFPE human lung adenocar...

Human Protein Microarray Specificity Validation



Analysis of HuProt (TM) microarray conta...