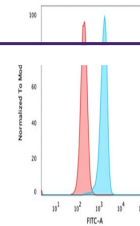

Product Datasheet

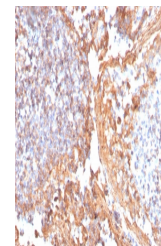
Beta Catenin Antibody (orb699582)

Description

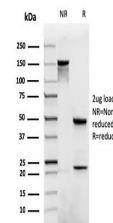
Beta-catenin associates with the cytoplasmic portion of E-



Flow cytometry testing of PFA-fixed huma...



IHC staining of FFPE human tonsil with r...



SDS-PAGE analysis of purified, BSA-free ...

Species/Host	Mouse
Reactivity	Human
Conjugation	Unconjugated
Tested Applications	ELISA, FACS, IHC-P
Immunogen	A recombinant human beta-Catenin (p120) protein fragment from the human protein was used as the immunogen for the recombinant Catenin beta antibody.
Preservatives	0.2 mg/ml in 1X PBS with 0.1 mg/ml rAlbumin (US sourced), 0.05% sodium azide
Storage	Store the recombinant Catenin beta antibody at 2-8°C (with azide) or aliquot and store at -20°C or colder (without azide).
Note	For research use only
Application notes	Optimal dilution of the recombinant Catenin beta antibody should be determined by the researcher.
Formula	0.2 mg/ml in 1X PBS with 0.1 mg/ml BSA (US sourced), 0.05% sodium azide
Isotype	Mouse IgG1, kappa
Clonality	Recombinant
Purity	Protein G affinity chromatography
Uniprot ID	P35222
Hazard Information	This recombinant Catenin beta antibody is available for research use only.
Dilution Range	Flow cytometry: 0.5-1ug/million cells, ELISA: order Ab without BSA for coating, Immunohistochemistry (FFPE): 1-2ug/ml for 30 minutes at RT
Expiration Date	12 months from date of receipt.