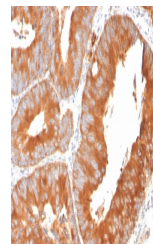


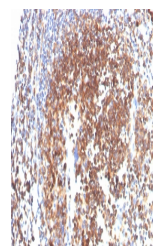
Product Datasheet

SLAMF7 Antibody / CS1 (orb699578)

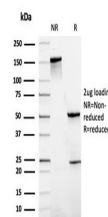
Description	CS1, also known as novel Ly9, SLAMF7, 19A24 or CRACC, is a homophilic cell surface receptor. It is a...
Species/Host	Mouse
Reactivity	Human
Conjugation	Unconjugated
Tested Applications	IHC-P
Immunogen	A portion of amino acids 249-335 from the human protein was used as the immunogen for the SLAMF7 antibody.
Preservatives	0.2 mg/ml in 1X PBS with 0.1 mg/ml rAlbumin (US sourced), 0.05% sodium azide
Storage	Store the SLAMF7 antibody at 2-8°C (with azide) or aliquot and store at -20°C or colder (without azide).
Note	For research use only
Application notes	Optimal dilution of the SLAMF7 antibody should be determined by the researcher.
Formula	0.2 mg/ml in 1X PBS with 0.1 mg/ml BSA (US sourced), 0.05% sodium azide
Isotype	Mouse IgG1, kappa
Clonality	Monoclonal
Purity	Protein G affinity chromatography
Uniprot ID	Q9NQ25
Hazard Information	This SLAMF7 antibody is available for research use only.
Dilution Range	Immunohistochemistry (FFPE): 1-2ug/ml for 30 minutes at RT
Expiration Date	12 months from date of receipt.



IHC staining of FFPE human spleen with S...



IHC staining of FFPE human tonsil with S...



SDS-PAGE analysis of purified, BSA-free ...