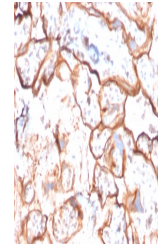


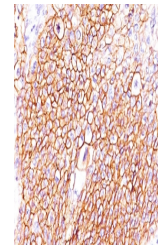
Product Datasheet

EGF Receptor / EGFR Antibody (orb699575)

Description	This MAb recognizes a protein of 170kDa, identified as EGFR. EGFR is type I receptor tyrosine kinase...
Species/Host	Mouse
Reactivity	Human
Conjugation	Unconjugated
Tested Applications	IHC-P, WB
Immunogen	A portion of amino acids 344-492 from the human protein was used as the immunogen for the EGFR antibody.
Preservatives	0.2 mg/ml in 1X PBS with 0.1 mg/ml rAlbumin (US sourced), 0.05% sodium azide
Storage	Store the EGFR antibody at 2-8°C (with azide) or aliquot and store at -20°C or colder (without azide).
Note	For research use only
Application notes	Optimal dilution of the EGFR antibody should be determined by the researcher.
Formula	0.2 mg/ml in 1X PBS with 0.1 mg/ml BSA (US sourced), 0.05% sodium azide
Isotype	Mouse IgG2b, kappa
Clonality	Monoclonal
Purity	Protein G affinity chromatography
Uniprot ID	P00533
Hazard Information	This EGFR antibody is available for research use only.
Dilution Range	Western blot: 1-2ug/ml, Immunohistochemistry (FFPE): 1-2ug/ml for 30 minutes at RT
Expiration Date	12 months from date of receipt.



IHC staining of FFPE human placenta with...



IHC staining of FFPE human lung squamous...



Western blot testing of human A431 cell ...