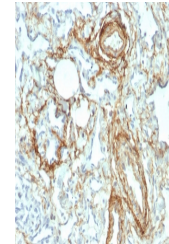


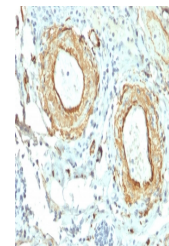
Product Datasheet

Elastin Antibody (orb699572)

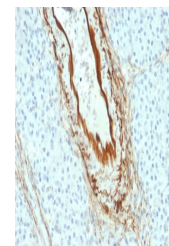
| | |
|----------------------------|---|
| Description | Elastin is a polymeric protein and is the main component of the extracellular matrix of arteries.It ... |
| Species/Host | Mouse |
| Reactivity | Human |
| Conjugation | Unconjugated |
| Tested Applications | ELISA, IHC-P |
| Immunogen | Recombinant full-length human Elastin protein was used as the immunogen for the Elastin antibody. |
| Preservatives | 0.2 mg/ml in 1X PBS with 0.1 mg/ml rAlbumin (US sourced), 0.05% sodium azide |
| Storage | Store the Elastin antibody at 2-8°C (with azide) or aliquot and store at -20°C or colder (without azide). |
| Note | For research use only |
| Application notes | Optimal dilution of the Elastin antibody should be determined by the researcher. |
| Formula | 0.2 mg/ml in 1X PBS with 0.1 mg/ml BSA (US sourced), 0.05% sodium azide |
| Isotype | Mouse IgG1, kappa |
| Clonality | Monoclonal |
| Purity | Protein G affinity chromatography |
| Uniprot ID | P15502 |
| Hazard Information | This Elastin antibody is available for research use only. |
| Dilution Range | ELISA: order Ab without BSA for coating,Immunohistochemistry (FFPE): 1-2ug/ml for 30 min at RT |
| Expiration Date | 12 months from date of receipt. |



IHC staining of FFPE human angiosarcoma ...



IHC staining of FFPE human small intesti...



IHC staining of FFPE human pancreas with...