

Product Datasheet

PSA / Prostate Specific Antigen Antibody (orb699568)

Description

Recognizes a single protein of 33-34kDa, identified


Species/Host

Rabbit

Reactivity

Human

Conjugation

Unconjugated

Tested Applications

IHC-P

IHC staining of FFPE human prostate carc...

Immunogen

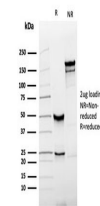
Recombinant full-length human KLK3/PSA protein was used as the immunogen for the recombinant PSA antibody.

Preservatives

0.2 mg/ml in 1X PBS with 0.1 mg/ml rAlbumin (US sourced), 0.05% sodium azide

Storage

Store the recombinant PSA antibody at 2-8°C (with azide) or aliquot and store at -20°C or colder (without azide).


Note

For research use only

Application notes

Optimal dilution of the recombinant PSA antibody should be determined by the researcher.

SDS-PAGE analysis of purified, BSA-free ...

Formula

0.2 mg/ml in 1X PBS with 0.1 mg/ml BSA (US sourced), 0.05% sodium azide

Isotype

Rabbit IgG

Clonality

Recombinant

Purity

Protein A affinity chromatography

Uniprot ID

P07288

Hazard Information

This recombinant PSA antibody is available for research use only.

Dilution Range

Immunohistochemistry (FFPE): 1-2ug/ml for 30 minutes at RT

Expiration Date

12 months from date of receipt.