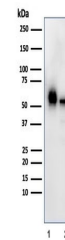


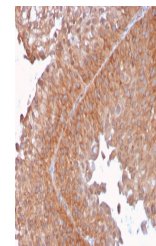
Product Datasheet

SERBP1 Antibody / PAI-RBP1 (orb699565)

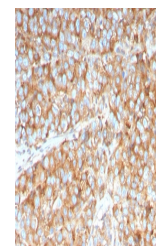
Description	PAI-RBP1 / SERBP1 is a membrane-associated protein that localizes to the nucleus, the perinuclear re...
Species/Host	Mouse
Reactivity	Human
Conjugation	Unconjugated
Tested Applications	IHC-P, WB
Immunogen	A portion of amino acids 3-139 from the human protein was used as the immunogen for the PAI-RBP1 antibody.
Preservatives	0.2 mg/ml in 1X PBS with 0.1 mg/ml rAlbumin (US sourced), 0.05% sodium azide
Storage	Store the PAI-RBP1 antibody at 2-8°C (with azide) or aliquot and store at -20°C or colder (without azide).
Note	For research use only
Application notes	Optimal dilution of the PAI-RBP1 antibody should be determined by the researcher.
Formula	0.2 mg/ml in 1X PBS with 0.1 mg/ml BSA (US sourced), 0.05% sodium azide
Isotype	Mouse IgG2b, kappa
Clonality	Monoclonal
Purity	Protein G affinity chromatography
Uniprot ID	Q8NC51
Hazard Information	This PAI-RBP1 antibody is available for research use only.
Dilution Range	Western blot: 1-2ug/ml, Immunohistochemistry (FFPE): 1-2ug/ml for 30 minutes at RT
Expiration Date	12 months from date of receipt.



Western blot testing of human 1) K562 an...



IHC staining of FFPE human urothelial ca...



IHC staining of FFPE human urothelial ca...