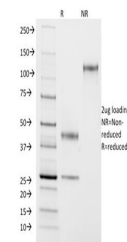


Product Datasheet

ASRGL1 Antibody / ALP1 (orb699564)

Description	ASRGL1 (Asparaginase-like protein 1), also known as CRASH, is a 308 amino acid protein belonging to ...
Species/Host	Mouse
Reactivity	Human
Conjugation	Unconjugated
Tested Applications	ELISA
Immunogen	Recombinant human ASRGL1 fragment from the human protein was used as the immunogen for the ASRGL1 antibody.
Preservatives	0.2 mg/ml in 1X PBS with 0.1 mg/ml rAlbumin (US sourced), 0.05% sodium azide
Storage	Store the ASRGL1 antibody at 2-8°C (with azide) or aliquot and store at -20°C or colder (without azide).
Note	For research use only
Application notes	Optimal dilution of the ASRGL1 antibody should be determined by the researcher.
Formula	0.2 mg/ml in 1X PBS with 0.1 mg/ml BSA (US sourced), 0.05% sodium azide
Isotype	Mouse IgG1, kappa
Clonality	Monoclonal
Purity	Protein G affinity chromatography
Uniprot ID	Q7L266
Hazard Information	This ASRGL1 antibody is available for research use only.
Dilution Range	ELISA: order Ab without BSA for coating
Expiration Date	12 months from date of receipt.



SDS-PAGE analysis of purified, BSA-free ...