
Product Datasheet

Mammaglobin A Antibody / SCGB2A2 (orb699559)

Description

Mammaglobin, a 10 kDa protein, is a cytoplasmic

I...

Species/Host

Rabbit

Reactivity

Human

Conjugation

Unconjugated

Tested Applications

IHC-P

Immunogen

Recombinant full-length human Mammaglobin/SCGB2A2 protein was used as the immunogen for the recombinant Mammaglobin antibody.

Preservatives

0.2 mg/ml in 1X PBS with 0.1 mg/ml rAlbumin (US sourced), 0.05% sodium azide

Storage

Store the recombinant Mammaglobin antibody at 2-8°C (with azide) or aliquot and store at -20°C or colder (without azide).

Note

For research use only

Application notes

Optimal dilution of the recombinant Mammaglobin antibody should be determined by the researcher.

Formula

0.2 mg/ml in 1X PBS with 0.1 mg/ml BSA (US sourced), 0.05% sodium azide

Isotype

Rabbit IgG, kappa

Clonality

Recombinant

Purity

Protein A affinity chromatography

Uniprot ID

[Q13296](#)

Hazard Information

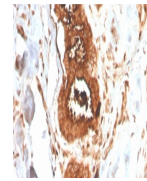
This recombinant Mammaglobin antibody is available for research use only.

Dilution Range

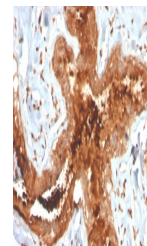
Immunohistochemistry (FFPE): 1-2ug/ml for 30 minutes at RT

Expiration Date

12 months from date of receipt.



IHC staining of FFPE human breast carcin...



IHC staining of FFPE human breast carcin...