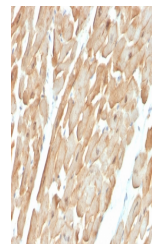


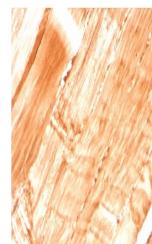
Product Datasheet

Dystrophin Antibody / DMD (orb699555)

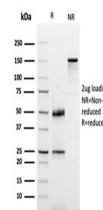
Description	Dystrophin-glycoprotein complex (DGC) connects the F-Actin cytoskeleton on the inner surface of musc...
Species/Host	Mouse
Reactivity	Human
Conjugation	Unconjugated
Tested Applications	ELISA, IHC-P
Immunogen	A portion of amino acids 114-263 from the human protein was used as the immunogen for the Dystrophin antibody.
Preservatives	0.2 mg/ml in 1X PBS with 0.1 mg/ml rAlbumin (US sourced), 0.05% sodium azide
Storage	Store the Dystrophin antibody at 2-8°C (with azide) or aliquot and store at -20°C or colder (without azide).
Note	For research use only
Application notes	Optimal dilution of the Dystrophin antibody should be determined by the researcher.
Formula	0.2 mg/ml in 1X PBS with 0.1 mg/ml BSA (US sourced), 0.05% sodium azide
Isotype	Mouse IgG, kappa
Clonality	Monoclonal
Purity	Protein G affinity chromatography
Uniprot ID	P11532
Hazard Information	This Dystrophin antibody is available for research use only.
Dilution Range	ELISA: order Ab without BSA for coating, Immunohistochemistry (FFPE): 1-2ug/ml for 30 minutes at RT
Expiration Date	12 months from date of receipt.



IHC staining of FFPE human cardiac muscl...



IHC staining of FFPE human skeletal musc...



SDS-PAGE analysis of purified, BSA-free ...