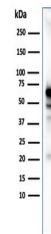


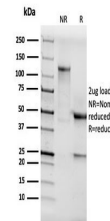
Product Datasheet

AKT1 Antibody (orb699554)

Description	Recognizes a protein of 62kDa, which is identified as AKT1. The serine/threonine kinase Akt family c...
Species/Host	Rabbit
Reactivity	Human
Conjugation	Unconjugated
Tested Applications	ELISA, WB
Immunogen	A portion of amino acids 85-189 from the human protein was used as the immunogen for the recombinant AKT1 antibody.
Preservatives	0.2 mg/ml in 1X PBS with 0.1 mg/ml rAlbumin (US sourced), 0.05% sodium azide
Storage	Store the recombinant AKT1 antibody at 2-8°C (with azide) or aliquot and store at -20°C or colder (without azide).
Note	For research use only
Application notes	Optimal dilution of the recombinant AKT1 antibody should be determined by the researcher.
Formula	0.2 mg/ml in 1X PBS with 0.1 mg/ml BSA (US sourced), 0.05% sodium azide
Isotype	Rabbit IgG
Clonality	Recombinant
Purity	Protein A affinity chromatography
Uniprot ID	P31749
Hazard Information	This recombinant AKT1 antibody is available for research use only.
Dilution Range	Western blot: 1-2ug/ml, ELISA: order Ab without BSA for coating
Expiration Date	12 months from date of receipt.



Western blot testing of human MCF7 cell ...



SDS-PAGE analysis of purified, BSA-free ...