
Product Datasheet

MBP Antibody / Myelin Basic Protein (orb699549)

Description

Myelin basic protein (MBP) is the second most



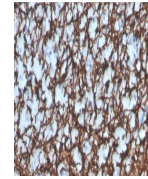
myeli...

Species/Host

Rabbit

Reactivity

Human



IHC staining of FFPE human brain with re...

Conjugation

Unconjugated

Tested Applications

IHC-P

Immunogen

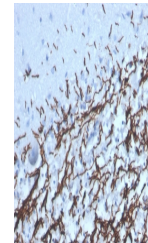
A portion of amino acids 150-250 from the human protein was used as the immunogen for the recombinant Myelin Basic Protein antibody.

Preservatives

0.2 mg/ml in 1X PBS with 0.1 mg/ml rAlbumin (US sourced), 0.05% sodium azide

Storage

Store the recombinant Myelin Basic Protein antibody at 2-8°C (with azide) or aliquot and store at -20°C or colder (without azide).



IHC staining of FFPE human brain with re...

Note

For research use only

Application notes

Optimal dilution of the recombinant Myelin Basic Protein antibody should be determined by the researcher.

Formula

0.2 mg/ml in 1X PBS with 0.1 mg/ml BSA (US sourced), 0.05% sodium azide

Isotype

Rabbit IgG

Clonality

Recombinant

Purity

Protein A affinity chromatography

Uniprot ID

P02686

Hazard Information

This recombinant Myelin Basic Protein antibody is available for research use only.

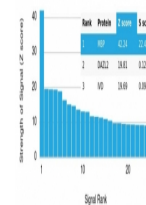
Dilution Range

Immunohistochemistry (FFPE): 1-2ug/ml for 30 minutes at RT

Expiration Date

12 months from date of receipt.

Human Protein Microarray Specificity Validation



Analysis of HuProt (TM) microarray conta...