

---

## Product Datasheet

**Integrin beta 1 Antibody / ITGB1 / CD29  
(orb699537)**

**Description**

CD29/Integrin beta 1/ITGB1 is an adhesion receptor


**Species/Host**

Mouse

**Reactivity**

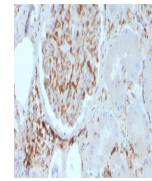
Human

**Conjugation**

Unconjugated

**Tested Applications**

ELISA, IHC-P



IHC staining of FFPE human kidney with I...

**Immunogen**

Purified human beta 1 integrin from HT1080 fibrosarcoma cells was used as the immunogen for the ITGB1 antibody.

**Preservatives**

0.2 mg/ml in 1X PBS with 0.1 mg/ml rAlbumin (US sourced), 0.05% sodium azide

**Storage**

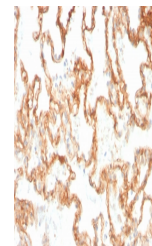
Store the ITGB1 antibody at 2-8°C (with azide) or aliquot and store at -20°C or colder (without azide).

**Note**

For research use only

**Application notes**

Optimal dilution of the ITGB1 antibody should be determined by the researcher.



IHC staining of FFPE human lung with ITG...

**Formula**

0.2 mg/ml in 1X PBS with 0.1 mg/ml BSA (US sourced), 0.05% sodium azide

**Isotype**

Mouse IgG1, kappa

**Clonality**

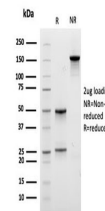
Monoclonal

**Purity**

Protein G affinity chromatography

**Uniprot ID**

**P05556**



SDS-PAGE analysis of purified, BSA-free ...

**Hazard Information**

This ITGB1 antibody is available for research use only.

**Dilution Range**

ELISA: order Ab without BSA for coating, Immunohistochemistry (FFPE): 1-2ug/ml for 30 minutes at RT

**Expiration Date**

12 months from date of receipt.