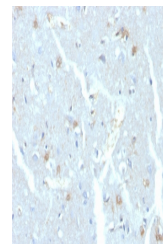


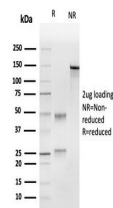
Product Datasheet

UBE2C Antibody (orb699528)

| | |
|----------------------------|---|
| Description | The ubiquitin (Ub) pathway involves three sequential enzymatic steps that facilitate the conjugation... |
| Species/Host | Mouse |
| Reactivity | Human |
| Conjugation | Unconjugated |
| Tested Applications | ELISA, IHC-P |
| Immunogen | Recombinant human full-length protein was used as the immunogen for the UBE2C antibody. |
| Preservatives | 0.2 mg/ml in 1X PBS with 0.1 mg/ml rAlbumin (US sourced), 0.05% sodium azide |
| Storage | Store the UBE2C antibody at 2-8°C (with azide) or aliquot and store at -20°C or colder (without azide). |
| Note | For research use only |
| Application notes | Optimal dilution of the UBE2C antibody should be determined by the researcher. |
| Formula | 0.2 mg/ml in 1X PBS with 0.1 mg/ml BSA (US sourced), 0.05% sodium azide |
| Isotype | Mouse IgG2b, kappa |
| Clonality | Monoclonal |
| Purity | Protein G affinity chromatography |
| Uniprot ID | 000762 |
| Hazard Information | This UBE2C antibody is available for research use only. |
| Dilution Range | ELISA: order Ab without BSA for coating, Immunohistochemistry (FFPE): 1-2ug/ml for 30 minutes at RT |
| Expiration Date | 12 months from date of receipt. |



IHC staining of FFPE human brain with UB...



SDS-PAGE analysis of purified, BSA-free ...