

---

## Product Datasheet

### Cytokeratin 8/18 Antibody (orb699527)

**Description**

Cytokeratin 8 (CK8) belongs to the type II (or B or basic)


**Species/Host**

Rabbit

**Reactivity**

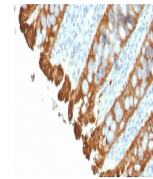
Human

**Conjugation**

Unconjugated

**Tested Applications**

IHC-P



IHC staining of FFPE human colon with re...

**Immunogen**

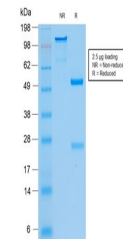
Recombinant full-length human KRT8/18 protein was used as the immunogen for the recombinant Cytokeratin 8/18 antibody.

**Preservatives**

0.2 mg/ml in 1X PBS with 0.1 mg/ml rAlbumin (US sourced), 0.05% sodium azide

**Storage**

Store the recombinant Cytokeratin 8/18 antibody at 2-8°C (with azide) or aliquot and store at -20°C or colder (without azide).



SDS-PAGE analysis of purified, BSA-free ...

**Note**

For research use only

**Application notes**

Optimal dilution of the recombinant Cytokeratin 8/18 antibody should be determined by the researcher.

**Formula**

0.2 mg/ml in 1X PBS with 0.1 mg/ml BSA (US sourced), 0.05% sodium azide

**Isotype**

Rabbit IgG, kappa

**Clonality**

Recombinant

**Purity**

Protein A affinity chromatography

**Uniprot ID**

**P05783, P05787**

**Hazard Information**

This recombinant Cytokeratin 8/18 antibody is available for research use only.

**Dilution Range**

Immunohistochemistry (FFPE): 1-2ug/ml for 30 min at RT

**Expiration Date**

12 months from date of receipt.