
Product Datasheet

Keratin 6B Antibody / Cytokeratin 6B (orb699511)

Description

This MAb recognizes a protein of 56kDa, identified as


Species/Host

Mouse

Reactivity

Human

Conjugation

Unconjugated

Tested Applications

IHC-P

IHC staining of FFPE human prostate with...

Immunogen

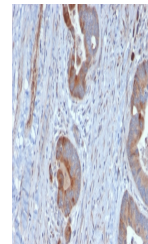
Recombinant full-length human KRT6B protein was used as the immunogen for the Cytokeratin 6B antibody.

Preservatives

0.2 mg/ml in 1X PBS with 0.1 mg/ml rAlbumin (US sourced), 0.05% sodium azide

Storage

Store the Cytokeratin 6B antibody at 2-8°C (with azide) or aliquot and store at -20°C or colder (without azide).


Note

For research use only

Application notes

Optimal dilution of the Cytokeratin 6B antibody should be determined by the researcher.

IHC staining of FFPE human prostate with...

Formula

0.2 mg/ml in 1X PBS with 0.1 mg/ml BSA (US sourced), 0.05% sodium azide

Isotype

Mouse IgG2a, kappa

Clonality

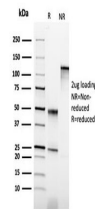
Monoclonal

Purity

Protein G affinity chromatography

Uniprot ID

P04259


Hazard Information

This Cytokeratin 6B antibody is available for research use only.

SDS-PAGE analysis of purified, BSA-free ...

Dilution Range

Immunohistochemistry (FFPE): 1-2ug/ml for 30 minutes at RT

Expiration Date

12 months from date of receipt.