
Product Datasheet

**Folate Hydrolase 1 Antibody / FOLH1 / PSMA
(orb699505)**

Description

Folate hydrolase 1 (FOLH1), also known as Prostate-

Species/Host

Mouse

Reactivity

Human

Conjugation

Unconjugated

Tested Applications

IHC-P, WB

Immunogen

A portion of amino acids 44-177 from the human protein was used as the immunogen for the FOLH1 antibody.

Preservatives

0.2 mg/ml in 1X PBS with 0.1 mg/ml rAlbumin (US sourced), 0.05% sodium azide

Storage

Store the FOLH1 antibody at 2-8°C (with azide) or aliquot and store at -20°C or colder (without azide).

Note

For research use only

Application notes

Optimal dilution of the FOLH1 antibody should be determined by the researcher.

Formula

0.2 mg/ml in 1X PBS with 0.1 mg/ml BSA (US sourced), 0.05% sodium azide

Isotype

Mouse IgG1, kappa

Clonality

Monoclonal

Purity

Protein G affinity chromatography

Uniprot ID
[Q04609](#)
Hazard Information

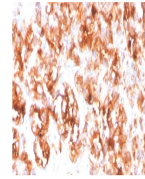
This FOLH1 antibody is available for research use only.

Dilution Range

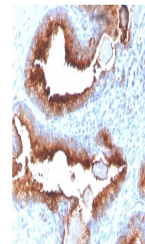
Western blot: 1-2ug/ml, Immunohistochemistry (FFPE): 1-2ug/ml for 30 minutes at RT

Expiration Date

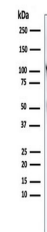
12 months from date of receipt.



IHC staining of FFPE human prostate carc...



IHC staining of FFPE human prostate carc...



Western blot testing of human LNCaP lysa...