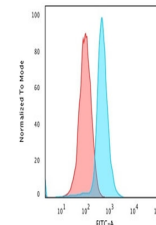


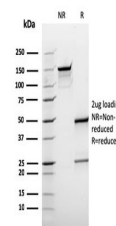
Product Datasheet

BCL10 Antibody (orb699504)

Description	BCL10, with an N-terminal caspase recruitment domain (CARD), is found in a number of apoptotic regul...
Species/Host	Mouse
Reactivity	Human
Conjugation	Unconjugated
Tested Applications	FACS, IHC-P
Immunogen	Amino acids 122-168 from the human protein were used as the immunogen for the BCL10 antibody.
Preservatives	0.2 mg/ml in 1X PBS with 0.1 mg/ml rAlbumin (US sourced), 0.05% sodium azide
Storage	Store the BCL10 antibody at 2-8°C (with azide) or aliquot and store at -20°C or colder (without azide).
Note	For research use only
Application notes	Optimal dilution of the BCL10 antibody should be determined by the researcher.
Formula	0.2 mg/ml in 1X PBS with 0.1 mg/ml BSA (US sourced), 0.05% sodium azide
Isotype	Mouse IgG1, kappa
Clonality	Recombinant
Purity	Protein G affinity chromatography
Uniprot ID	O95999
Hazard Information	This BCL10 antibody is available for research use only.
Dilution Range	Flow cytometry: 1-2ug/million cells, Immunohistochemistry (FFPE): 1-2ug/ml for 30 minutes at RT
Expiration Date	12 months from date of receipt.



Flow cytometry testing of PFA-fixed huma...



SDS-PAGE analysis of purified, BSA-free ...