

---

## Product Datasheet

### CEA Antibody / Carcinoembryonic Antigen (orb699497)

**Description**

Carcinoembryonic antigen (CEA) is a glycoprotein

ad...

**Species/Host**

Rabbit

**Reactivity**

Human

**Conjugation**

Unconjugated

**Tested Applications**

IHC-P

**Immunogen**

Recombinant full-length human CEA protein was used as the immunogen for the recombinant CEA antibody.

**Preservatives**

0.2 mg/ml in 1X PBS with 0.1 mg/ml rAlbumin (US sourced), 0.05% sodium azide

**Storage**

Store the recombinant CEA antibody at 2-8°C (with azide) or aliquot and store at -20°C or colder (without azide).

**Note**

For research use only

**Application notes**

Optimal dilution of the recombinant CEA antibody should be determined by the researcher.

**Formula**

0.2 mg/ml in 1X PBS with 0.1 mg/ml BSA (US sourced), 0.05% sodium azide

**Isotype**

Rabbit IgG

**Clonality**

Recombinant

**Purity**

Protein A affinity chromatography

**Uniprot ID**

**P06731**

**Hazard Information**

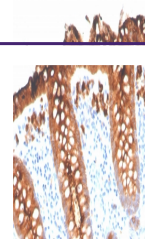
This recombinant CEA antibody is available for research use only.

**Dilution Range**

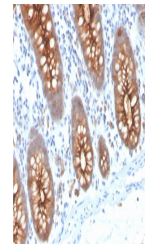
Immunohistochemistry (FFPE): 1-2ug/ml for 30 minutes at RT

**Expiration Date**

12 months from date of receipt.



IHC staining of FFPE human colon with re...



IHC staining of FFPE human colon with re...