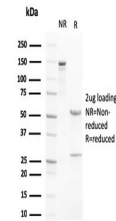


## Product Datasheet

### LXRB Antibody / NR1H2 (orb699494)

<b>Description</b>	The liver X receptors, LXRA (NR1H3) and LXRB (NR1H2) form a subfamily of the nuclear receptor superf...
<b>Species/Host</b>	Mouse
<b>Reactivity</b>	Human
<b>Conjugation</b>	Unconjugated
<b>Tested Applications</b>	ELISA
<b>Immunogen</b>	Recombinant full-length human NR1H2/LXRB protein was used as the immunogen for the LXRB antibody.
<b>Preservatives</b>	0.2 mg/ml in 1X PBS with 0.1 mg/ml rAlbumin (US sourced), 0.05% sodium azide
<b>Storage</b>	Store the LXRB antibody at 2-8°C (with azide) or aliquot and store at -20°C or colder (without azide).
<b>Note</b>	For research use only
<b>Application notes</b>	Optimal dilution of the LXRB antibody should be determined by the researcher.
<b>Formula</b>	0.2 mg/ml in 1X PBS with 0.1 mg/ml BSA (US sourced), 0.05% sodium azide
<b>Isotype</b>	Mouse IgG2c, kappa
<b>Clonality</b>	Monoclonal
<b>Purity</b>	Protein G affinity chromatography
<b>Uniprot ID</b>	<b>P55055</b>
<b>Hazard Information</b>	This LXRB antibody is available for research use only.
<b>Dilution Range</b>	ELISA: order Ab without BSA for coating
<b>Expiration Date</b>	12 months from date of receipt.



SDS-PAGE analysis of purified, BSA-free ...