

---

## Product Datasheet

### **GCLM Antibody / Glutamate-Cysteine Ligase Regulatory Subunit (orb699488)**

**Description**

GCLM, also known as gamma-glutamylcysteine

glutathi...

**Species/Host**

Mouse

**Reactivity**

Human

**Conjugation**

Unconjugated

**Tested Applications**

IHC-P, WB

**Immunogen**

Recombinant human full-length GCLM protein was used as the immunogen for the GCLM antibody.

**Preservatives**

0.2 mg/ml in 1X PBS with 0.1 mg/ml rAlbumin (US sourced), 0.05% sodium azide

**Storage**

Store the GCLM antibody at 2-8°C (with azide) or aliquot and store at -20°C or colder (without azide).

**Note**

For research use only

**Application notes**

Optimal dilution of the GCLM antibody should be determined by the researcher.

**Formula**

0.2 mg/ml in 1X PBS with 0.1 mg/ml BSA (US sourced), 0.05% sodium azide

**Isotype**

Mouse IgG2a, kappa

**Clonality**

Monoclonal

**Purity**

Protein G affinity chromatography

**Uniprot ID**

**P48507**

**Hazard Information**

This GCLM antibody is available for research use only.

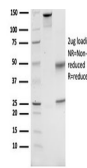
**Dilution Range**

Western blot: 1-2ug/ml, Immunohistochemistry (FFPE): 1-2ug/ml for 30 minutes at RT

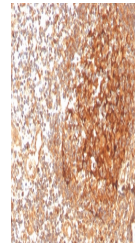
**Expiration Date**

12 months from date of receipt.

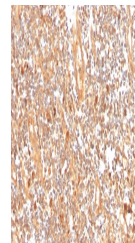
100 75 50 25 10



SDS-PAGE analysis of purified, BSA-free ...



IHC staining of FFPE human tonsil with G...



IHC staining of FFPE human tonsil with G...