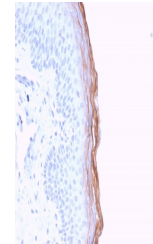


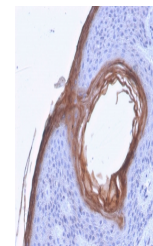
## Product Datasheet

### Kallikrein 5 Antibody / KLK5 (orb699487)

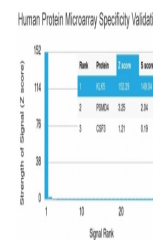
|                            |   |
|----------------------------|---|
| <b>Description</b>         | Kallikreins (KLKs) belong to the serine protease family of proteolytic enzymes. Human pancreatic/ren...         |
| <b>Species/Host</b>        | Mouse   |
| <b>Reactivity</b>          | Human   |
| <b>Conjugation</b>         | Unconjugated  |
| <b>Tested Applications</b> | IHC-P   |
| <b>Immunogen</b>           | A portion of amino acids 36-177 from the human protein was used as the immunogen for the Kallikrein 5 antibody. |
| <b>Preservatives</b>       | 0.2 mg/ml in 1X PBS with 0.1 mg/ml rAlbumin (US sourced), 0.05% sodium azide                                    |
| <b>Storage</b>             | Store the Kallikrein 5 antibody at 2-8°C (with azide) or aliquot and store at -20°C or colder (without azide).  |
| <b>Note</b>                | For research use only   |
| <b>Application notes</b>   | Optimal dilution of the Kallikrein 5 antibody should be determined by the researcher.                           |
| <b>Formula</b>             | 0.2 mg/ml in 1X PBS with 0.1 mg/ml BSA (US sourced), 0.05% sodium azide   |
| <b>Isotype</b>             | Mouse IgG2c, kappa  |
| <b>Clonality</b>           | Monoclonal  |
| <b>Purity</b>              | Protein G affinity chromatography   |
| <b>Uniprot ID</b>          | <a href="#">Q9Y337</a>  |
| <b>Hazard Information</b>  | This Kallikrein 5 antibody is available for research use only.  |
| <b>Dilution Range</b>      | Immunohistochemistry (FFPE): 1-2ug/ml for 30 minutes at RT  |
| <b>Expiration Date</b>     | 12 months from date of receipt.   |



IHC staining of FFPE human skin with Kal...



IHC staining of FFPE human skin with Kal...



Analysis of HuProt (TM) microarray conta...